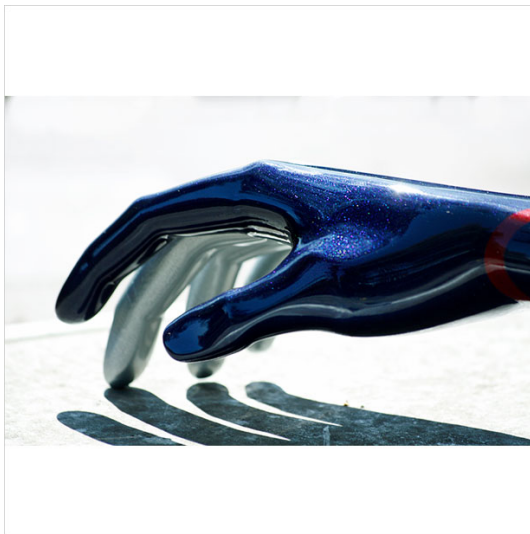


New products of 2018

Glaze Prosthetics

Lower and upper arm prostheses adapted to customers' specific requirements



The Polish company Glaze Prosthetics will be exhibiting an innovative, individual product which ensures that lower and upper arm prostheses are perfectly adapted to the requirements of the customer. The various models can be designed to suit the customer's requirements. Notwithstanding the variety available, all the prostheses fit the same socket. As a result, they can be swapped by the user at any time in just a few seconds.

Texture, colour and the overall design – everything will be available on the company's website. With just a few clicks, customers can adapt the prosthesis to their individual needs and wishes. The entire process will, according to Glaze Prosthetics, be continuously updated and will provide people with an opportunity give expression to their "inner artist".